

Sheffield City Council
Children, Young People & Family Support
Scrutiny Committee
Monday 4th November 2019

Overview of 2019 Pupil Outcomes
City Context and School Performance



2019 Headlines - primary

- Mixed picture for primary – some improvement but some measures have declined .
- KS2 results must be considered in context – the Sheffield cohort has more low attaining pupils than the national average and we know that prior attainment is the strongest predictor of future attainment.
- When KS2 results are analysed by prior attainment group Sheffield is still at or above the national average on most measures.
- Progress measures at KS2 also take into account starting points. Reading and writing progress not as strong as 2018, progress in maths remains average.
- Provisional KS2 benchmarking data indicates that Sheffield's national ranks are similar to 2018, as is performance in relation to core city and statistical neighbour benchmarks.
- The national ranks for EGPS and writing attainment have improved.
- Sheffield's national core city and stat neighbour rankings have fallen for Y1 phonics.



2019 Headlines – Key Stage 4 & Key Stage 5

- 25 more GCSEs moved to reformed specifications this year which make comparisons with last year on attainment 8 and progress 8 difficult.
- Attainment 8 improved slightly (+0.2pts) but remains in 3rd quartile of LAs
- Progress 8 is slightly lower than last year but is equal to national and in 2nd quartile of LAs.
- Ebacc pass rate improved at both 4+ and 5+, closing the gap with national.

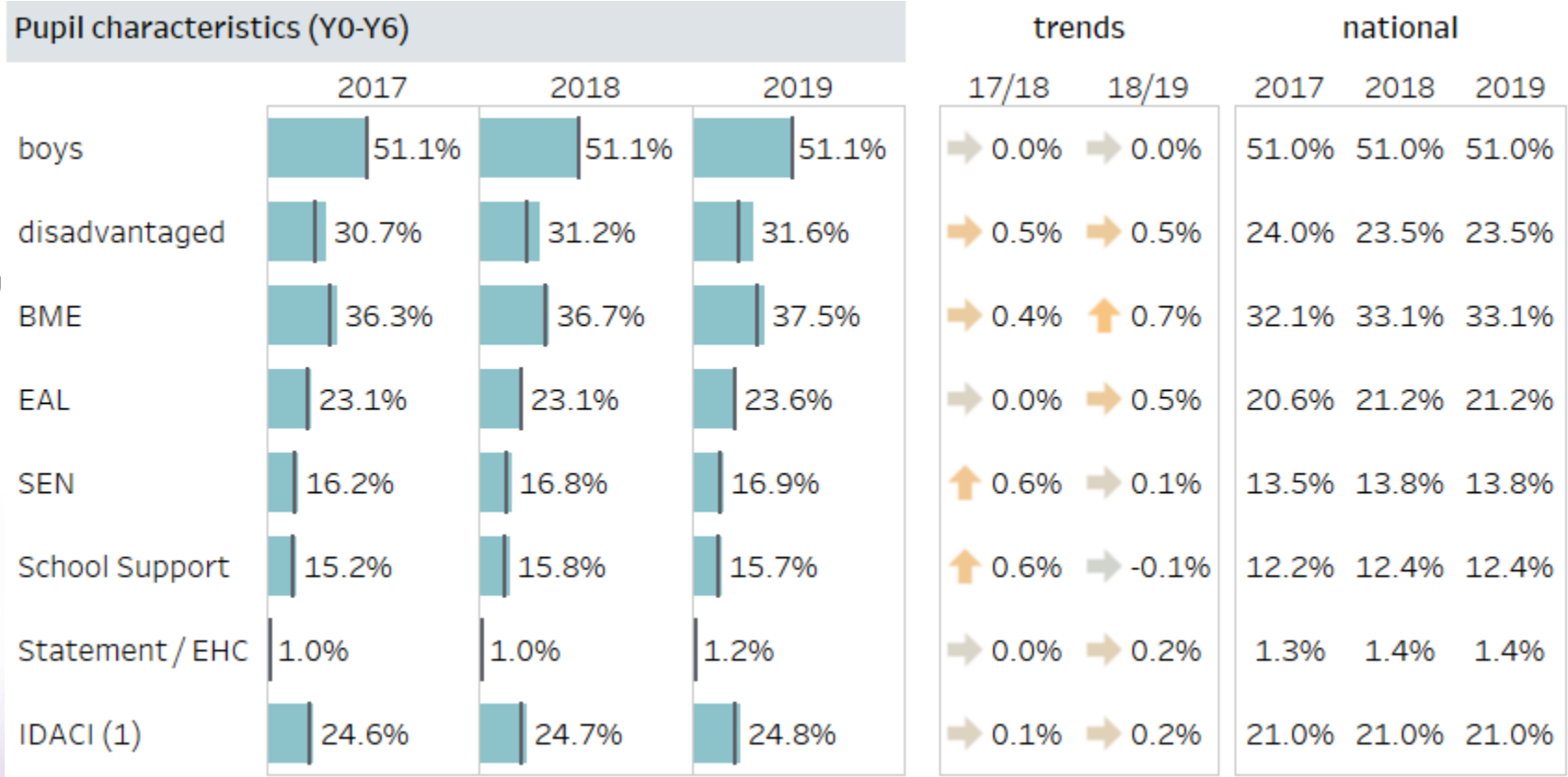
Page 15•

A-level performance maintained compared to last year although difficult to make comparisons as more A-levels have moved to linear courses.

- A level average points per entry is similar to national average and Sheffield is in 2nd quartile.
- The % achieving AAB or above including 2 facilitating subjects (A-levels generally accepted for university entry) is above the national average and Sheffield ranks in the top quartile of LAs.



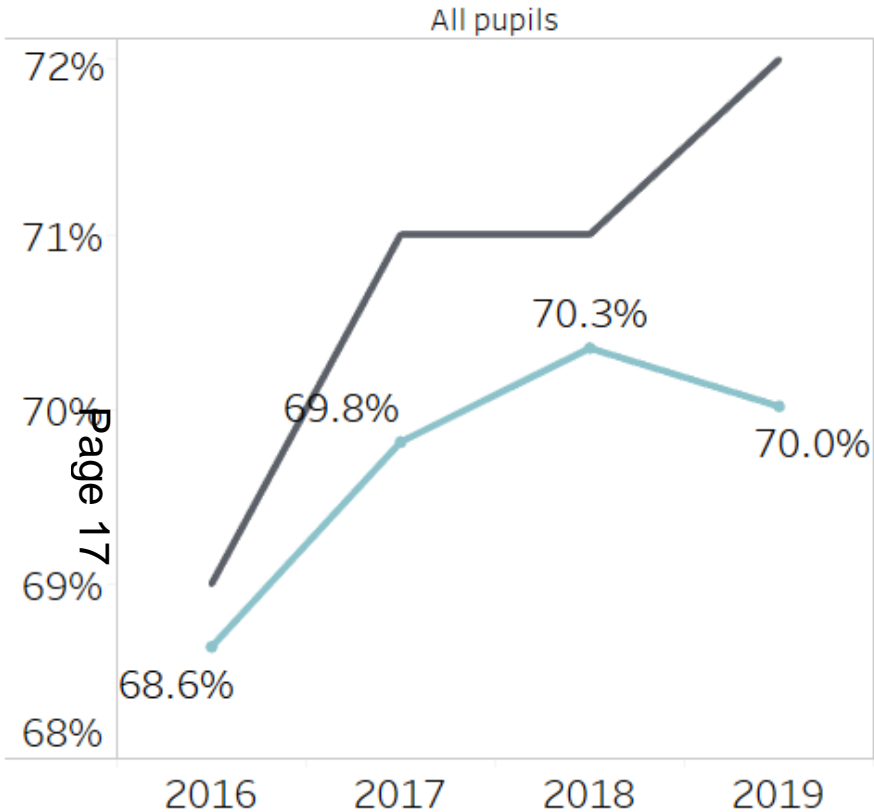
Context – primary cohort



- Sheffield has a higher % of disadvantaged, BME, EAL and SEN children than the national average.
- These groups tend to have lower prior attainment and so these cohort characteristics impact on City-level results.

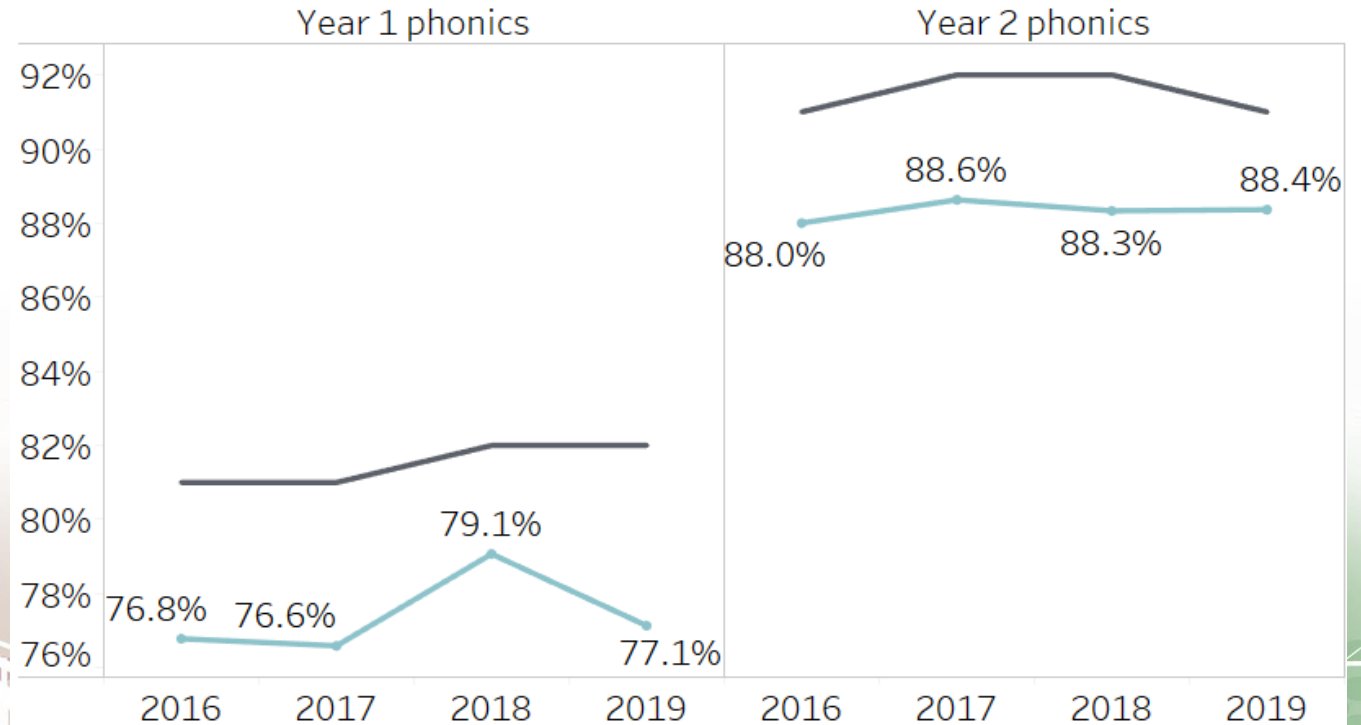
Headline overview – Foundation Stage and Phonics

% of pupils achieving a good level of development



- Good level of development at the end of the Foundation Stage slightly below 2018, with national improving.
- Y1 phonics lower than 2018, but improvement on 2017.

% of pupils working at the expected level in phonics



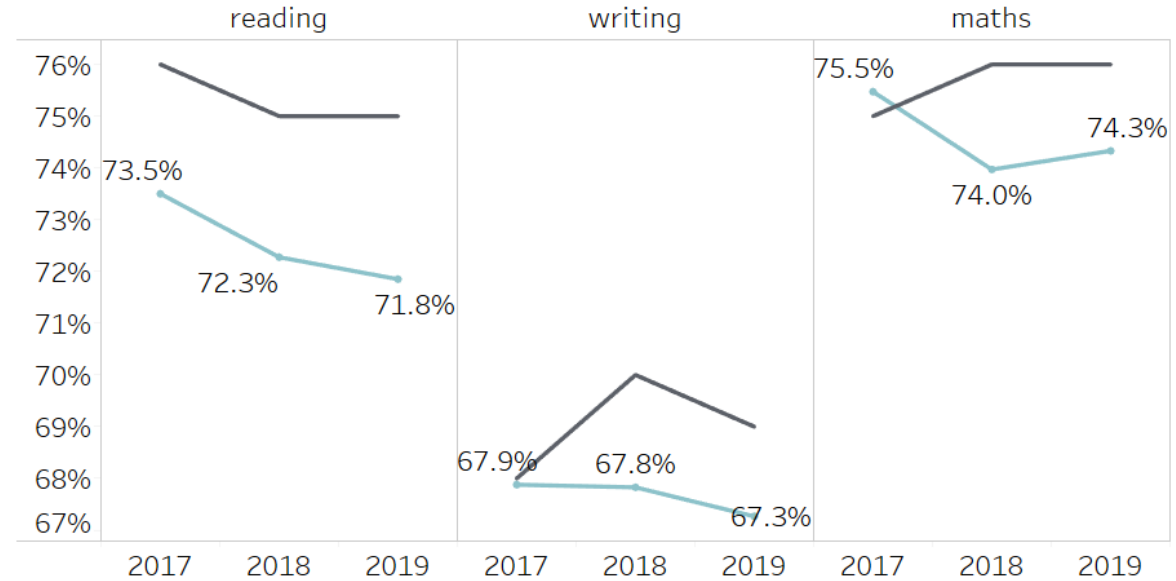
Headline overview – Key Stage 1

- % of pupils reaching the expected standard dropped slightly in reading and writing but improved in maths

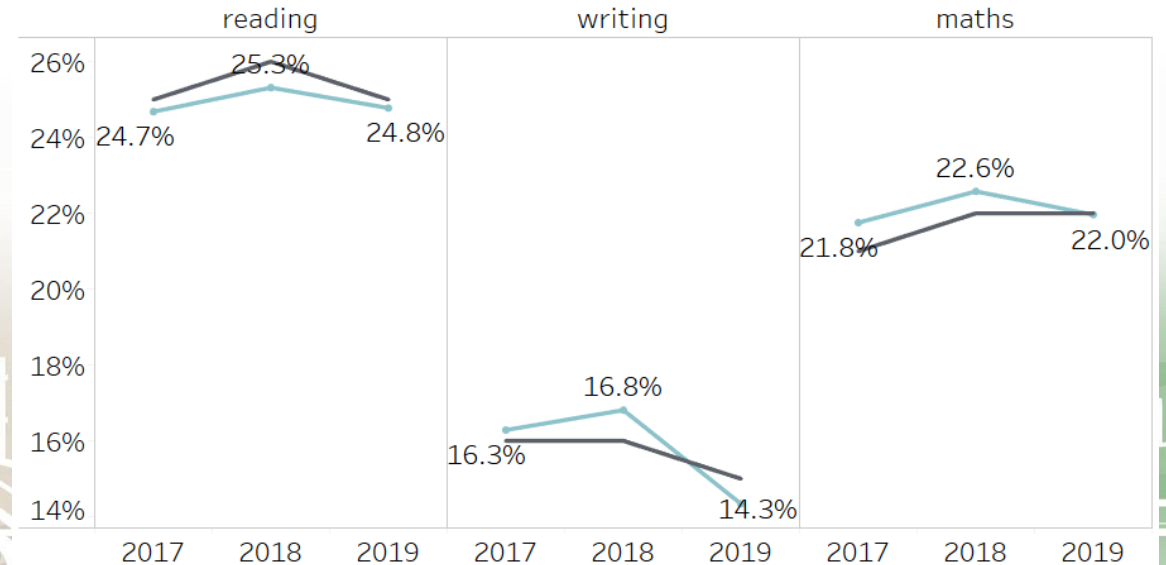
Page 18

Results fell for greater depth across the 3 measures – all remained above 2017 except for writing

% of pupils achieving the expected standard at the end of KS1

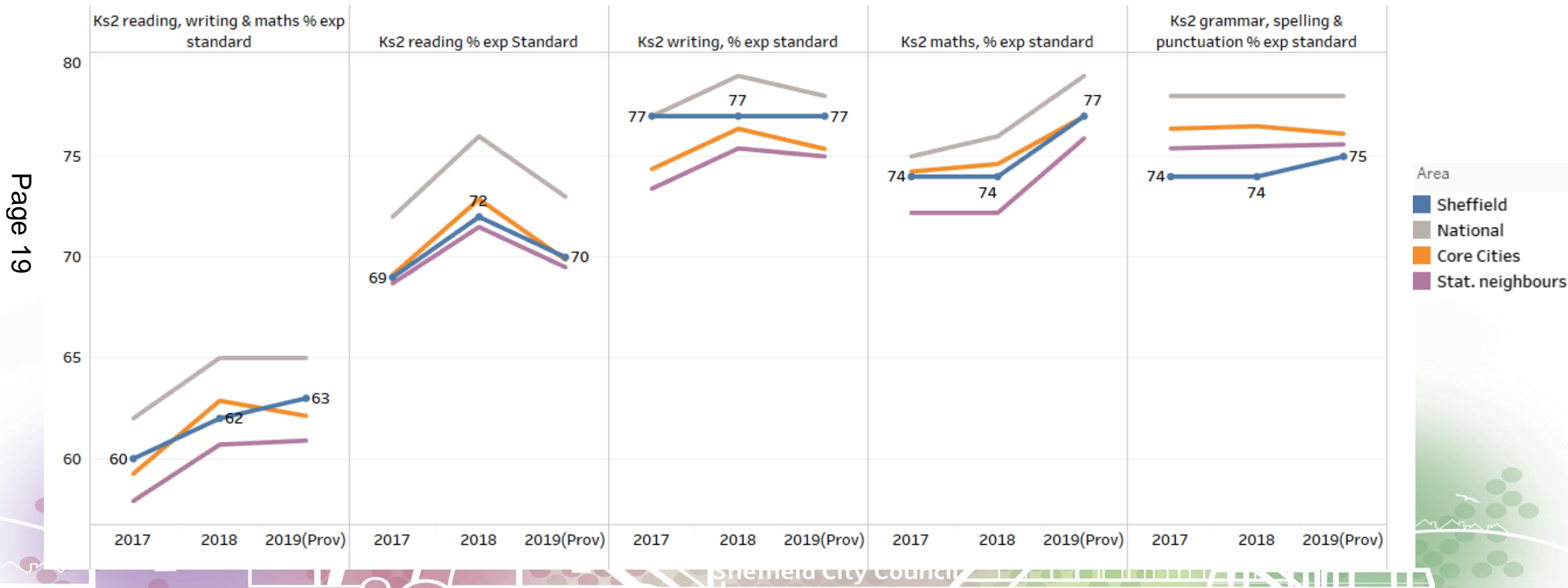


% of pupils achieving greater depth at the end of KS1



Headline overview – KS2 expected standard

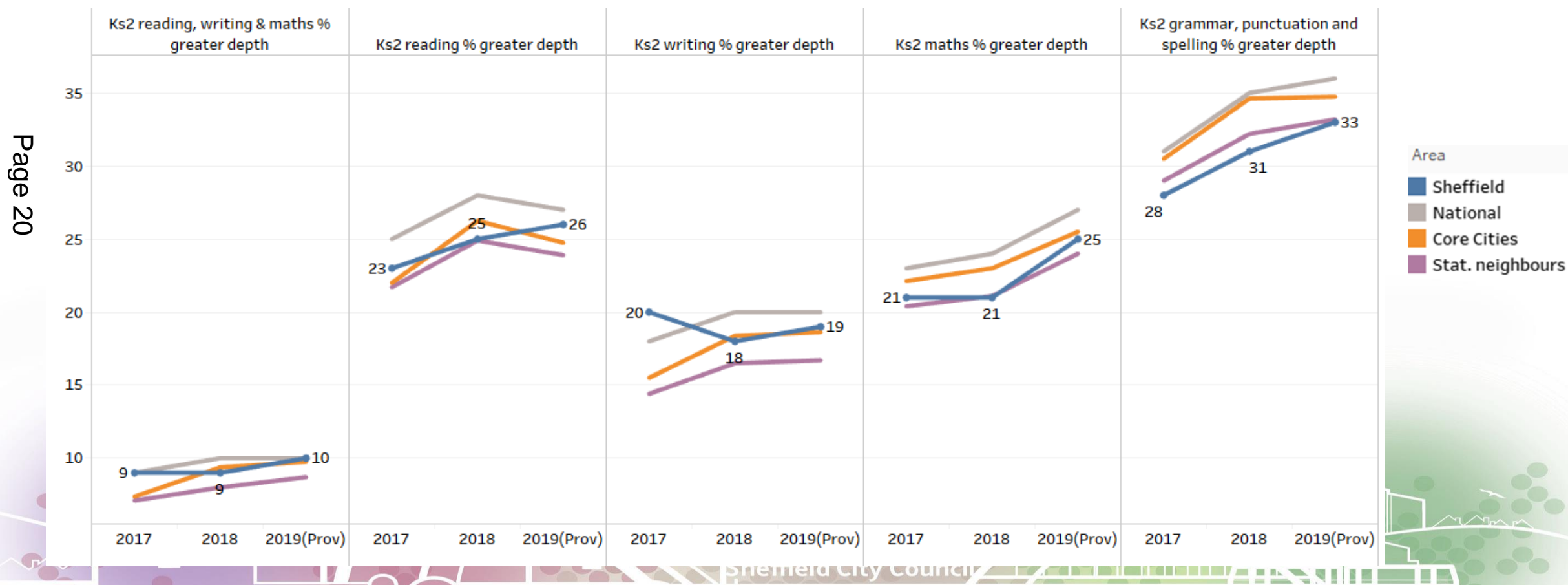
- Results improved for combined and maths.
- Sheffield is equal to or above Core Cities and statistical neighbours for all measures except spelling, punctuation and grammar



NB Sheffield Figures are DfE published provisional

Headline overview – KS2 greater depth

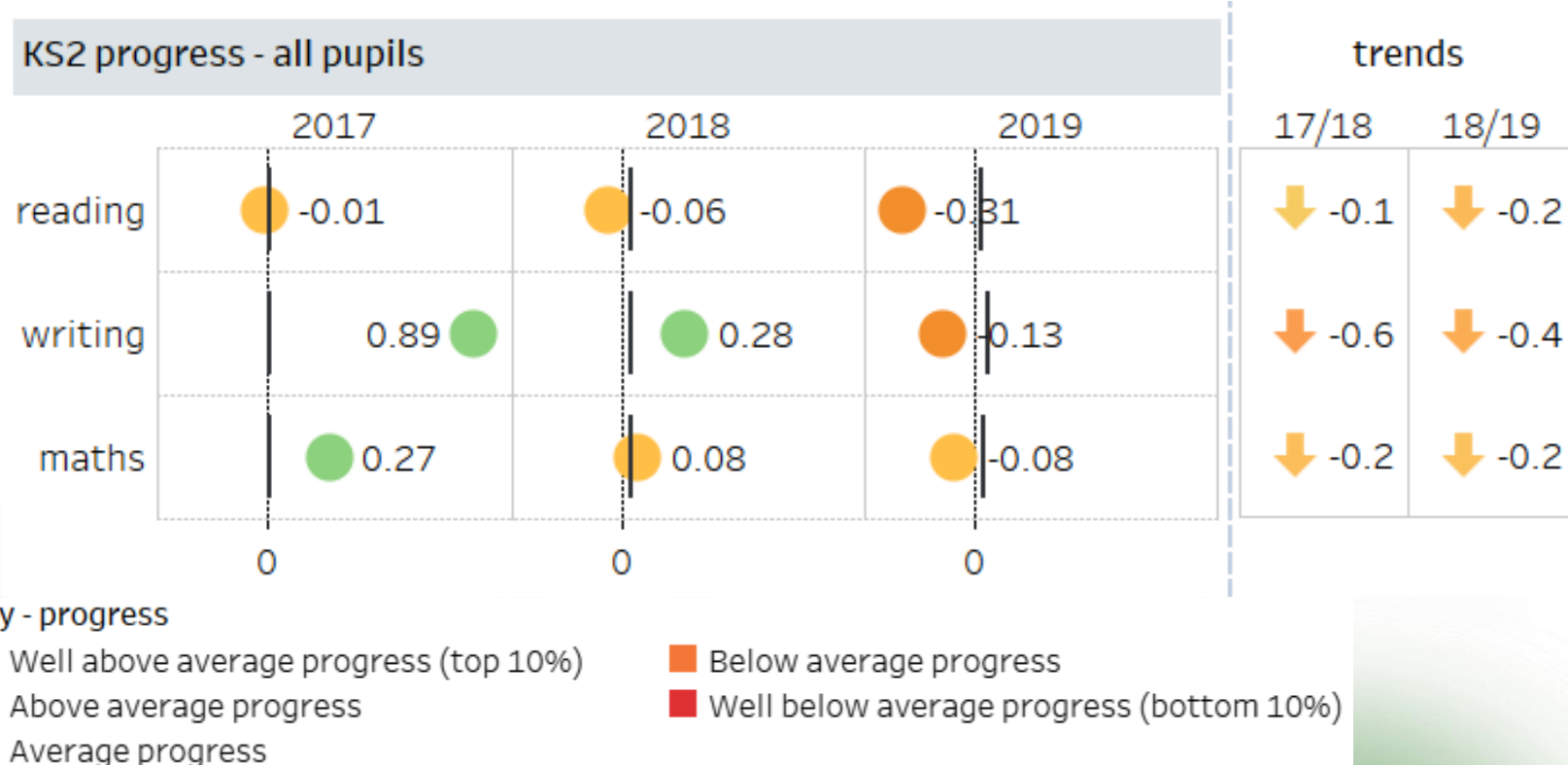
- All measures have improved and Sheffield is at least equal to all benchmarks for the combined measure, above core cities and stat neighbours in reading but below in maths and spelling, punctuation and grammar.



NB Sheffield Figures are DfE published provisional

KS2 progress headlines

- Progress data is still **provisional** at this point.
- Progress in maths is in line with expectations but below previous year.
- Progress reading and writing slightly below expected.
- Progress is impacted by changes in relative levels of disadvantage against the national picture.



Primary LA benchmarking - 2019

- KS2 progress ranks available in December
- KS2 ranks based on provisional data

Page 22

	National	Core Cities	Statistical Neighbours
EYFS Good Level Dev	111/151 (-13)	3/8 (-1)	5/11 (-2)
Y1 Phonics	148/151 (-11)	8/8 (-3)	10/11 (-2)
KS1 reading EXS+	117/151 (+7)	3/8 (0)	4/11 (+2)
KS1 writing EXS+	105/151 (-7)	3/8 (-1)	3/11 (0)
KS1 maths EXS+	100/151 (+6)	3/8 (0)	4/11 (-1)
KS2 combined EXS+	97/151 (+13)	3/8 (0)	5/11 (0)
KS2 reading EXS+	114 /151 (+12)	3/8 (+1)	5/11 (+1)
KS2 writing EXS+	93/151 (+13)	3/8 (0)	3/11 (+1)
KS2 maths EXS+	102/151 (0)	4/8 (-1)	5/11 (0)
KS2 EGPS EXS+	118/151 (+13)	6/8 (+2)	6/11 (+2)

Context – Y11 cohort

- Larger cohort than 2018
- BME cohort gradually increasing.
- % EAL similar to 2018.
- Slight increase in % disadvantaged.

- Page 23
- Fewer mobile pupils (joined after the start of Y10 ~ 5%)
 - Fewer low attaining and more middle and high attaining – overall KS2 APS similar

Cohort characteristics (Y11)

	2017	2018	2019
boys	51.5%	51.5%	51.2%
disadvantaged	33.3%	30.7%	31.8%
BME	27.1%	30.3%	32.3%
EAL	17.8%	18.8%	18.5%
SEN	13.5%	14.1%	13.2%
School Support	11.4%	12.4%	11.3%
Statement / EHC	2.1%	1.7%	1.9%
IDACI (1)	23.1%	23.1%	23.5%

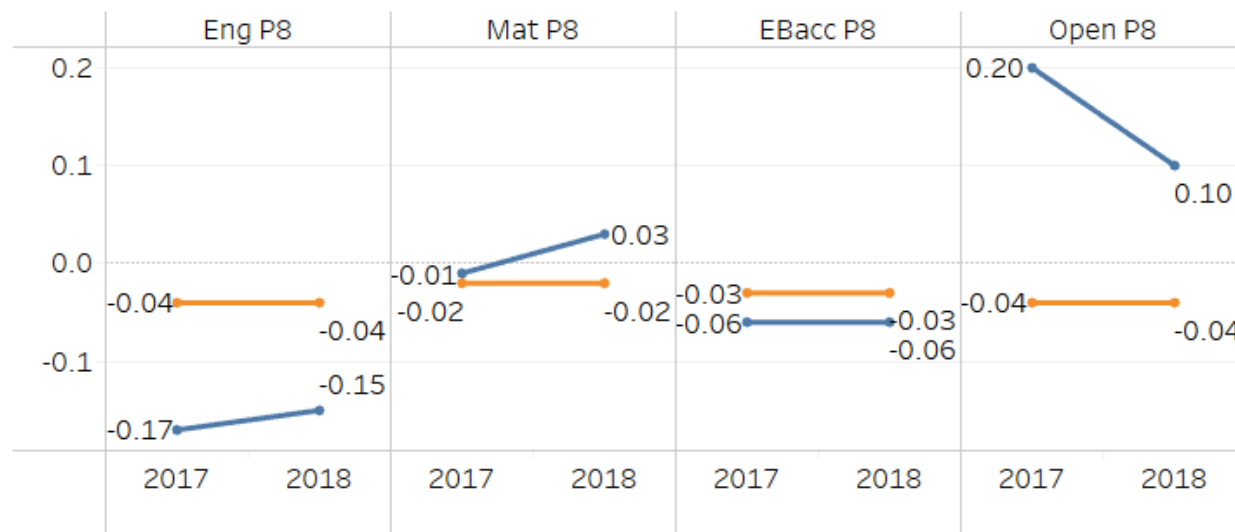
1) IDACI is the Income Deprivation Affecting Children Index, this is a measure of the % of children living in low income households

2019 Key Stage 4 – headlines (provisional)

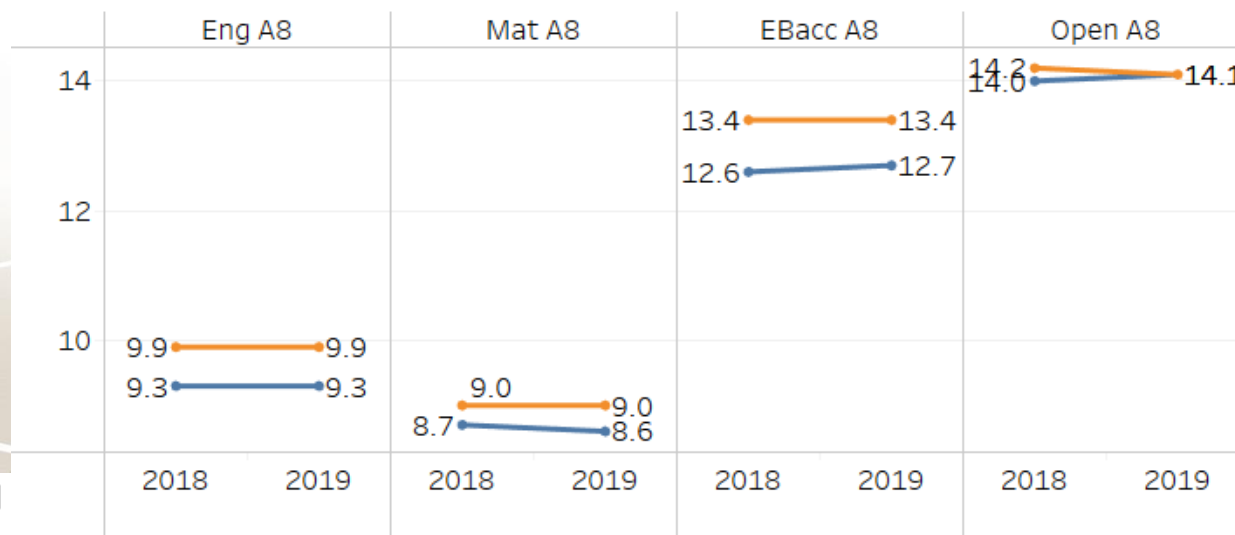
- Overall Progress 8 slightly lower than 2018 but equal to national.
- Improvements in English and Maths.
- Ebacc maintained.
- Overall attainment 8 slightly improved.
- Open and Ebacc elements improved.
- English component maintained.
- Slight drop in maths component.

Page 24

Progress 8 components



Attainment 8 components



Sheffield
National

2019 Key Stage 4 – LA benchmarking (provisional)

- National ranks remain relatively stable at Key Stage 4.
- Slight improvement in Attainment 8.
- Progress 8 remains in 2nd quartile.

Page 25

	National	Core Cities	Statistical Neighbours
Attainment 8	98/151 (+9)	2/8 (+3)	5/11 (+1)
Progress 8	71/151 (-11)	3/8 (-2)	5/11 (-1)
P8 English	101/151 (+1)	5/8 (-1)	5/11 (0)
P8 maths	82/151 (-28)	3/8 (-1)	4/11 (0)
P8 EBacc	81/151 (-3)	4/8 (-1)	4/11 (-1)
P8 open	38 /151 (-6)	1/8 (0)	4/11 (0)
5+ English & maths	107/151 (-5)	3/8 (+2)	6/11 (-1)
4+ English & maths	117/151 (+3)	4/8 (0)	6/11 (0)
EBacc points	98/151	4/8 (+1)	5/11 (+3)

Key Stage 5 (provisional)

- The average points per subject for A level students is equal to 2018 final (32.5) and remains close to the national average (32.6). Sheffield ranks 60 out of 151 for this measure.
- The % of students achieving the highest grades at A-level (3 or more A* or A grade) fell 0.5pp to 12.5% whilst the national average remained at 10%. Sheffield remains in the top quartile, ranking 26 of 151 LAs.
- The % of students achieving AAB or above including 2 facilitating subjects (A-levels accepted for entry to university) remains above the national average (16% compared to 13%). Sheffield ranks 28 out of 151 on this measure.
- Final Ks5 results are published at the end of January and are often subject to greater change than Ks2/Ks4.